

Technical Data Sheet

PROPRIETARY RIGHTS NOTICE This document and all information contained within it is the property of Hamilton Beach Brands, Inc. (HBB). It is confidential and proprietary and has been provided to you for a limited purpose. It must be returned or destroyed upon request. Disclosure, reproduction or use of this document and any information contained within it, in full or in part, for any purpose is forbidden without the prior written consent of HBB. No photographs may be taken of any article fabricated or assembled from this document without the prior written consent of HBB.

HBF500-230V Food Blender Technical Information

Trouble Shooting Guide

- **Symptom:** During a normal cycle the machine stopped.
- **Cause:** The unit has possibly overheated. Check the electric circuit. Check the reset switch. If both check OK unplug the machine, allow it stand for 15-30 minutes. Plug it back in and try running the machine.

Repair Guide

Housing Disassembly (see figure 1)

- Turn power switch to “off” position and unplug the machine.
- Remove feet.
- Remove the four screws under the feet.
- Carefully lift bottom from unit; wires will limit your movement.

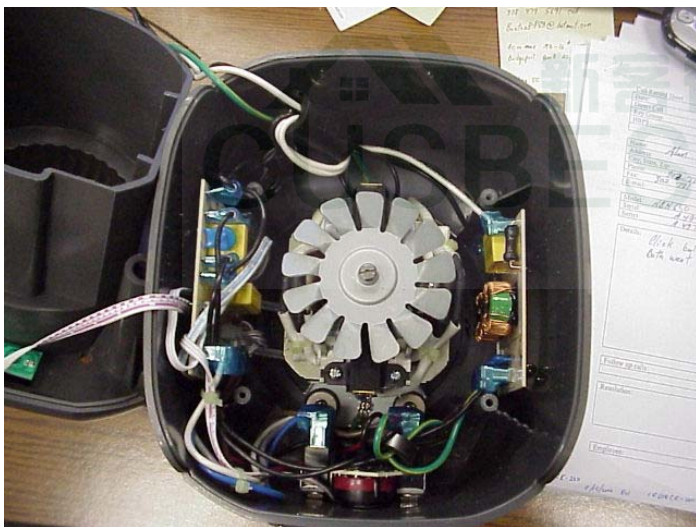



Figure 1. Machine interior.

Wiring Detail

Cord (see figure 2)

- White cord lead splits with one lead connecting to the PC board terminal N and one lead connecting to the inside terminal of the circuit breaker switch.
- Black cord lead connects to the outside terminal of the circuit breaker switch.
- Green cord wire connects to the motor ground.

 4421 Waterfront Drive Glen Allen, VA 23060	Revision Description:		Production Release					
	Request Number:	DOC2648	Revision Date:	4/17/12	Approved by:	DOC2648		
	Issue Code(s):	CS, SP	Page:	1 of 4	Document #:	520006100	Rev:	A

Technical Data Sheet

PROPRIETARY RIGHTS NOTICE This document and all information contained within it is the property of Hamilton Beach Brands, Inc. (HBB). It is confidential and proprietary and has been provided to you for a limited purpose. It must be returned or destroyed upon request. Disclosure, reproduction or use of this document and any information contained within it, in full or in part, for any purpose is forbidden without the prior written consent of HBB. No photographs may be taken of any article fabricated or assembled from this document without the prior written consent of HBB.




Figure 2. Cord and circuit breaker switch.

PC Board (see figure 3)

- The motor field lead closest to the PC board connects to terminal M1. There should be no current reading.
- The motor field lead closest to the RFI board connects to terminal M2. There should be line current when cycle start is activated.
- One white lead from the cord connects to terminal N. There should be no current reading.
- The black lead from the center terminal of the circuit breaker switch connects to terminal L. There should be line current present.
- The 4-conductor cable from the LED cycle counter connects to terminal J7.
- The 3-conductor cable from the speed control connects to terminal J8.
- The 2 – 3-conductor cables from the jar sensors connect to terminals IC3 and IC4
- The lead from terminal P1 on the RFI board connects to the P1 terminal on the PC board.
- The lead from terminal P2 on the RFI board connects to the P2 terminal on the PC board.

Note: When making the following connections “top” and “bottom” are relative to the machine assembled and sitting upright.

- “Off “ terminal lead connects to the top terminal of the on/off switch.
-5 VDC reading with switch in off position.
- “On” terminal lead connects to the center terminal of the on/off switch.
-5 VDC reading while the machine is running.
- “Start” terminal lead connects to bottom terminal of the on/off switch.
Momentary -5 VDC when start switch is activated.
- “Pulse” terminal lead connects to the top terminal of the hi/low/pulse switch.
-5 VDC when pulse switch is activated.

 4421 Waterfront Drive Glen Allen, VA 23060	Revision Description:		Production Release					
	Request Number:	DOC2648	Revision Date:	4/17/12	Approved by:	DOC2648		
	Issue Code(s):	CS, SP	Page:	2 of 4	Document #:	520006100	Rev:	A

Technical Data Sheet

PROPRIETARY RIGHTS NOTICE This document and all information contained within it is the property of Hamilton Beach Brands, Inc. (HBB). It is confidential and proprietary and has been provided to you for a limited purpose. It must be returned or destroyed upon request. Disclosure, reproduction or use of this document and any information contained within it, in full or in part, for any purpose is forbidden without the prior written consent of HBB. No photographs may be taken of any article fabricated or assembled from this document without the prior written consent of HBB.

- “High” terminal lead connects to the bottom terminal of the hi/low/pulse switch.
-5 VDC while running on high speed.
- “Low” lead connects to the center terminal of the hi/low/pulse switch.
-5 VDC while running on high or low speed.

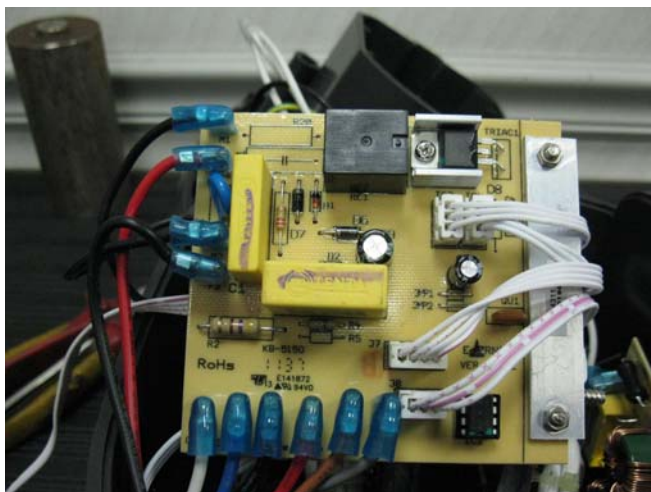


Figure 3. PC Board

RFI Board (see figure 4)

- One white lead from the cord connects to terminal N. There should be no current reading.
- The lead from the center terminal of the circuit breaker connects to terminal L202.
- The lead from the motor ground connects to the GND terminal.
- The lead from terminal P1 on the PC board connects to the P1 terminal on the RFI board.
- The lead from terminal P2 on the PC board connects to the P2 terminal on the RFI board.

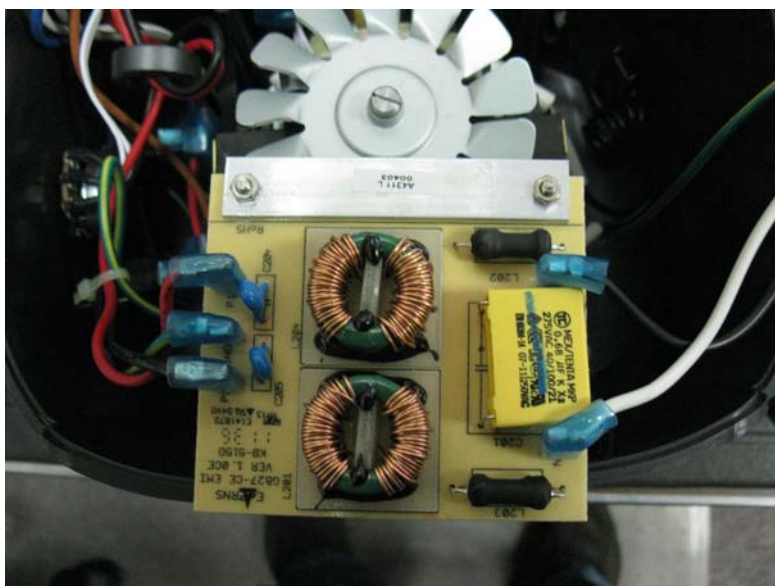



Figure 4. RFI Board

 4421 Waterfront Drive Glen Allen, VA 23060	Revision Description:		Production Release					
	Request Number:	DOC2648	Revision Date:	4/17/12	Approved by:	DOC2648		
	Issue Code(s):	CS, SP	Page:	3 of 4	Document #:	520006100	Rev:	A

Technical Data Sheet

PROPRIETARY RIGHTS NOTICE This document and all information contained within it is the property of Hamilton Beach Brands, Inc. (HBB). It is confidential and proprietary and has been provided to you for a limited purpose. It must be returned or destroyed upon request. Disclosure, reproduction or use of this document and any information contained within it, in full or in part, for any purpose is forbidden without the prior written consent of HBB. No photographs may be taken of any article fabricated or assembled from this document without the prior written consent of HBB.

Switches

- Important: The ground harness must be connected to the on/off switch, the hi/low/pulse switch and the motor ground.
- The switches are keyed to ensure alignment.
- The speed control has a single pin and hole for alignment.
- See PC board wiring instructions for switch wire placement.

Motor Removal and Replacement

- Disassemble housings as described in **Housing Disassembly** above.
- Remove the two ground screws.
- Disconnect the motor leads from the PC board.
- Remove the four screws securing the motor to the upper housing.
- Lift the motor from the shroud.
- Re-assemble in reverse order.
-


PC Board and RFI board Removal and Replacement

- Carefully slide a long philips head screwdriver between the board and the housing and remove the two screws that secure the bracket.
- Lift the PC board or RFI board from the machine and disconnect the wires.
- Re-assemble in reverse order.

How to Determine Cycle Count

- Turn the power switch to the “off” position.
- Unplug the machine.
- Turn the machine upside down and position so that you can look into the three holes on the bottom/front of the machine.
- Plug the machine into a power source.
- Count and record the number of flashes from the LED lights; first Red, then Yellow, then Green.
- Once complete add two zeros to the end. This is your cycle count.
- Example: Red – 2, Yellow – 0, Green – 8. You have recorded 208. At the end add two zeros - 20800. Your cycle count is 20,800.

Last revised 2/24/2012

 4421 Waterfront Drive Glen Allen, VA 23060	Revision Description:		Production Release					
	Request Number:	DOC2648	Revision Date:	4/17/12	Approved by:	DOC2648		
	Issue Code(s):	CS, SP	Page:	4 of 4	Document #:	520006100	Rev:	A

ENG-FRM-RIC-4.32, Rev. E